

How to assemble and disassemble Anafi



Prerequisites

The best way to repair ANAFI is to use Parrot official drones repair kit. You will need the cruciform as well as the Torx 5 (T5) in order to carry out this procedure.



Parrot repair kit

Anafi disassembly process

- Remove the battery from the drone.
- Gently unstick the sticker from the body of the drone.



- Remove both screws under the sticker and then quickly put the sticker back in position to stop the glue from drying.

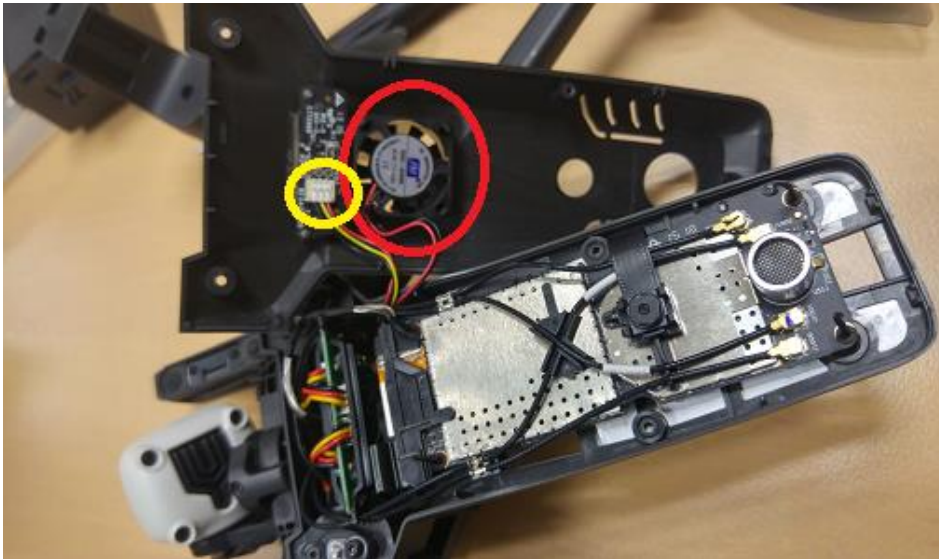


- Remove both screws from the bottom of the drone at the arms junction.

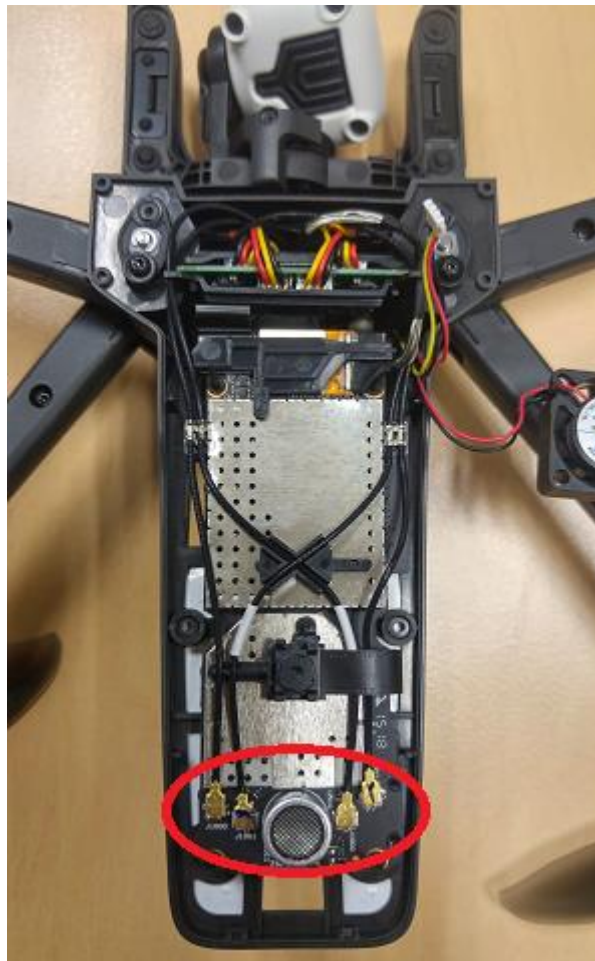


- Lift the bottom cover from the front of the drone, then push it toward the rear to remove it.

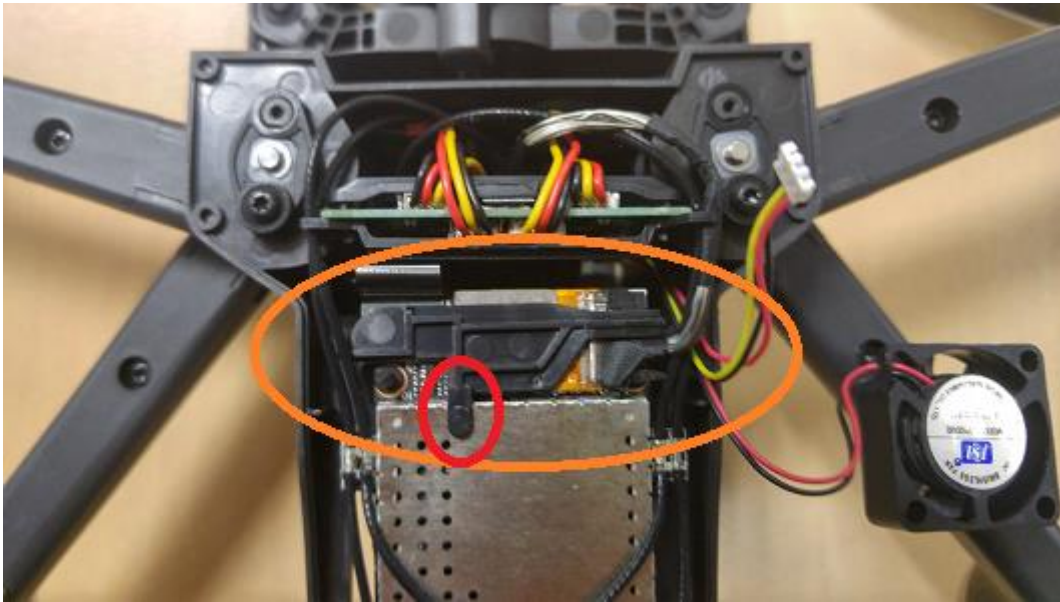
- Pull the ventilator to remove it from its slot and remove the LED connector, near the ventilator.



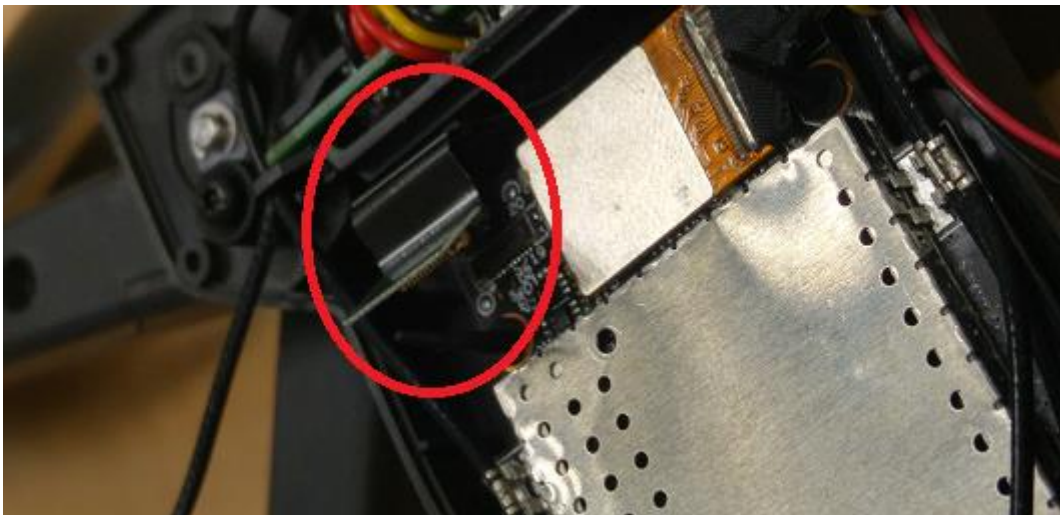
- Remove antennas from the motherboard. Antennas on the middle of the motherboard are linked to the rear feet; the side antennas are plugged to the front feet.



- Remove the plastic holder from the motherboard by pulling on the plastic stamp, then slide the holder.

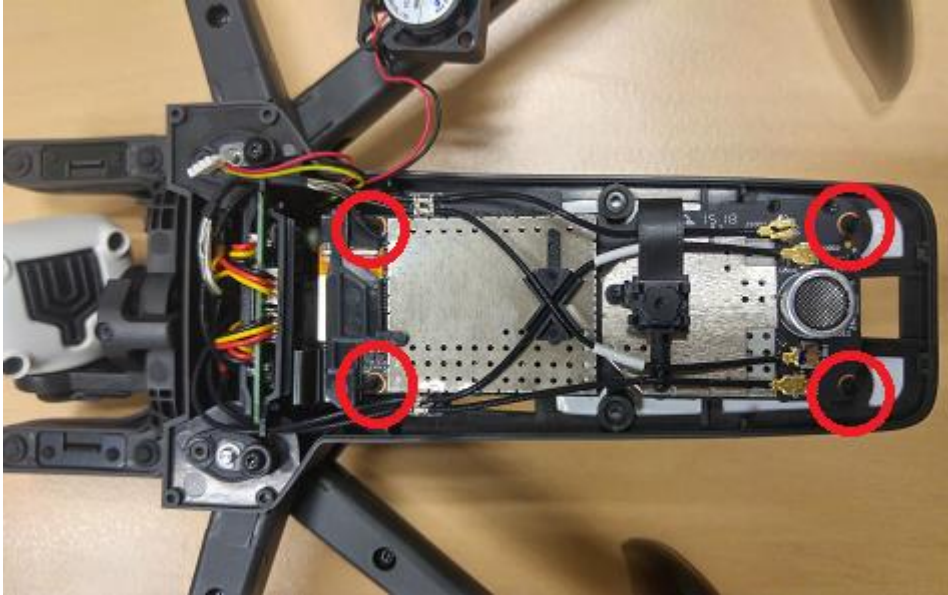


- Remove the gimbal connector from the motherboard.



- Unplug the micro coaxial wire from the motherboard.

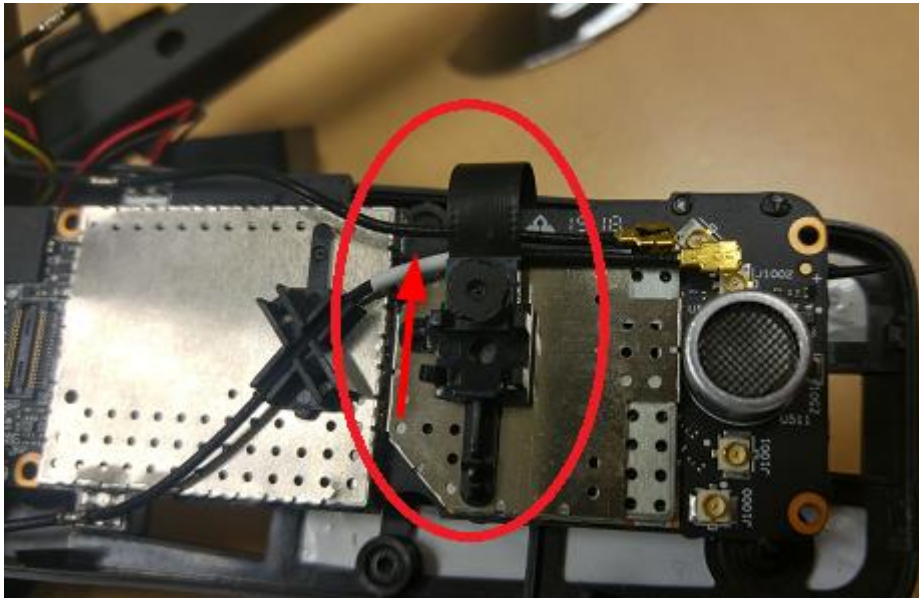
- Remove the four rubbers gently: Parrot recommends you hold the motherboard during the process, to stop rubbers from falling from their support. Once rubbers are removed, unplug the GPS antenna which can be found on hidden face of the motherboard.



- Unstick the SD slot, then remove it by pulling it through the plastic structure's hole.



- Remove the vertical camera from the support by pushing gently on it.



- Remove the three screws under each arm of the drone.



- Pull on the bottom cover of each arm to remove them.



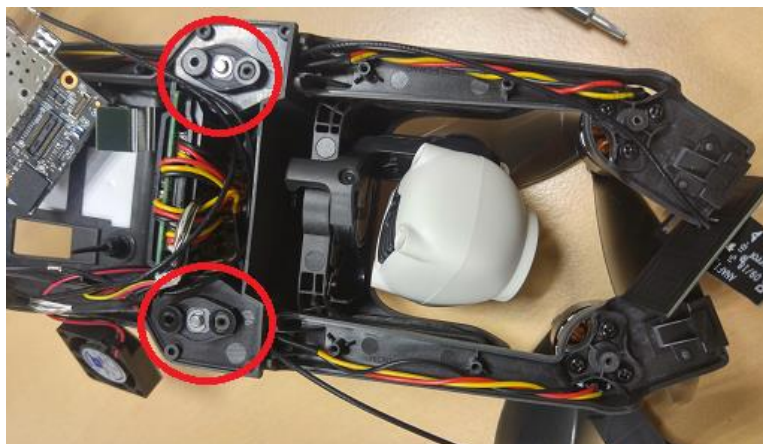
- Remove the two screws from the GPS cover (orange circle) then push on the button above located the gimbal to remove the cover (red circle).



- Remove the screws closest to the center of the GPS card.

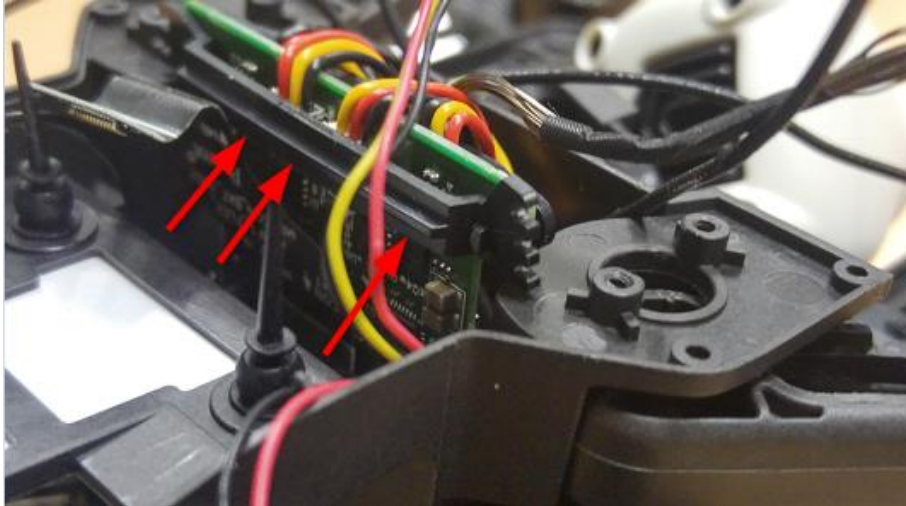


- Remove the screws holding the hinges: a screw can be found at each extremity of the GPS card. Do not forget to remove screws from the bottom of the drone as well.
- Retract the arms towards the body of the drone before removing the black plastic holder of each hinge.

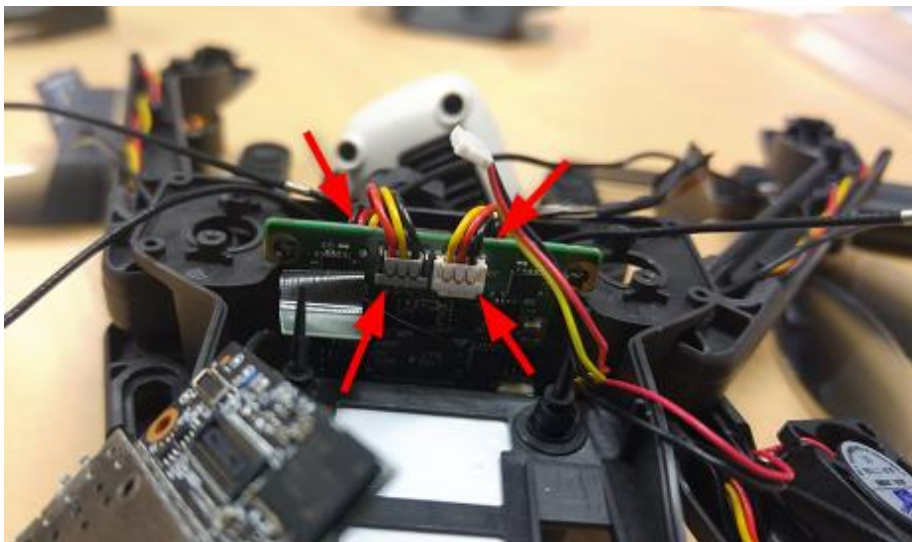


- Push the lower side of each hinge to remove them.
- Caution: a washer will fall off from each hinge when removed, make sure that you do not lose them.

- Remove the plastic part which holds antennas by pulling the clips on each side of the part.

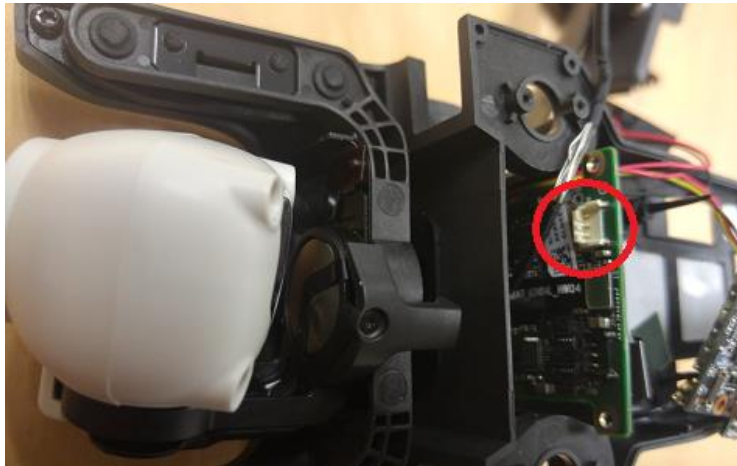


- Unplug motors by pulling the connectors out of their sockets.
- Caution: Do not pull on the wires.



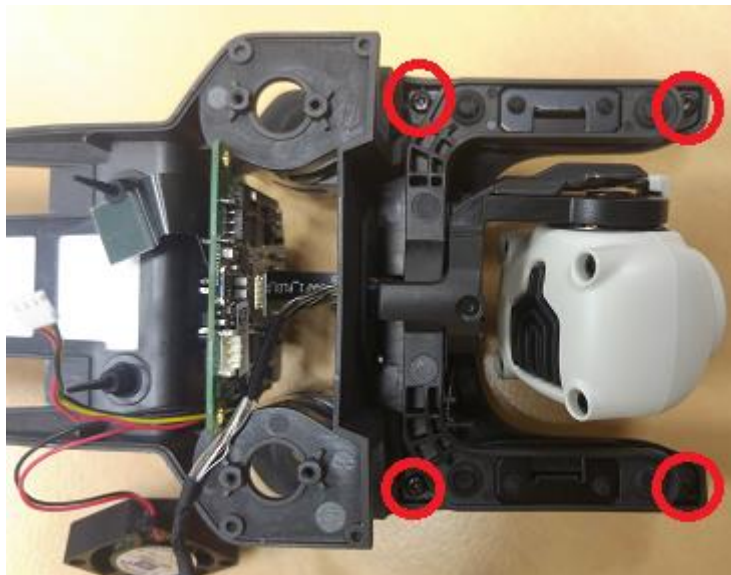
- Remove the arms carefully, one after the other: make sure that antenna cables do not get stuck with other cables.

- Unplug the gimbal's motor wire from the motor card.



It is easier to remove the Gimbal before removing the motor card

- Remove the four screws on the lower side of the Gimbal



- There is a rubber part with holes letting wires go through to connect it from the gimbal to the motor card: the small hole is dedicated to the flex wire; the larger one is meant to receive the micro coaxial wire.
- Remove the gimbal from the body.

- Remove the three screws from the motor card, two of them are visible once you remove the plastic part between the gimbal and the motor card.



- Remove the motor card by pushing it slightly toward the bottom of the drone
- If you need to change the motor, remove both antennas and the reflector simultaneously. Then, unscrew the three screws from under the motor to remove it and replace it.



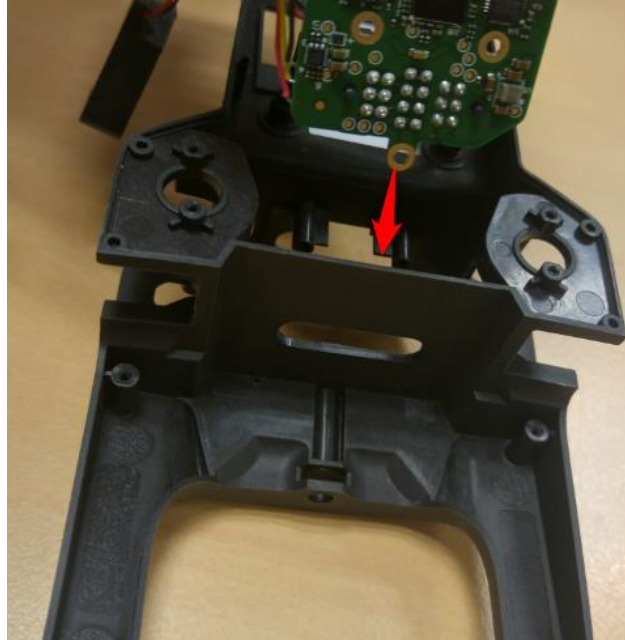
Drone component



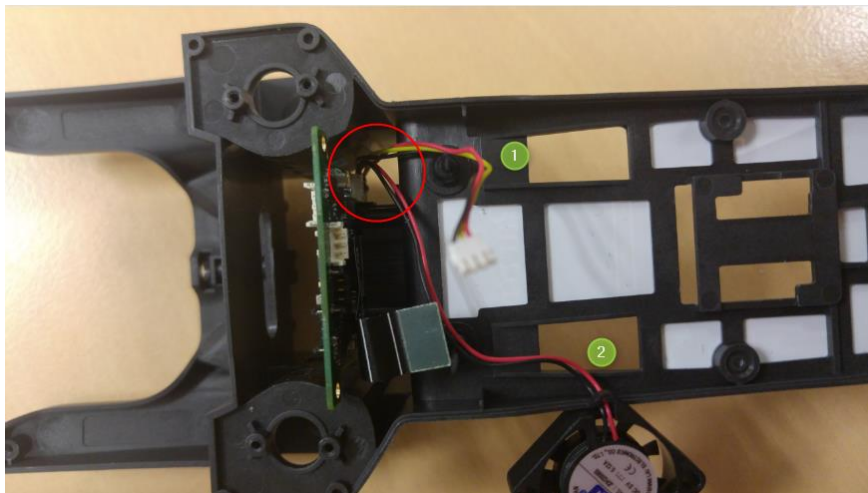
Number	Spare part associated
1	Central body
2	Motherboard
3	Motor card + ventilator
4	Motor + propeller (X4)
5	Camera + Gimbal
6	Flex wire and micro coaxial wire holder
7	GPS holder
8	Foot (x4)
9	Bottom cover
10	Antenna + reflector + wire
11	GPS card
12	Arm hinges
13	Motherboard holder for motor wire
14	antenna and micro coaxial wire holder
15	Arm washer

Anafi assembly process

- Plug the ventilator to the motor card before putting the card back in its slot.
- Insert the motor card from the bottom of the drone.
- Screw the motor card to the center body.



- The LED wire and the ventilator must be placed between the motor card and the support (on the right side, seen from the bottom).



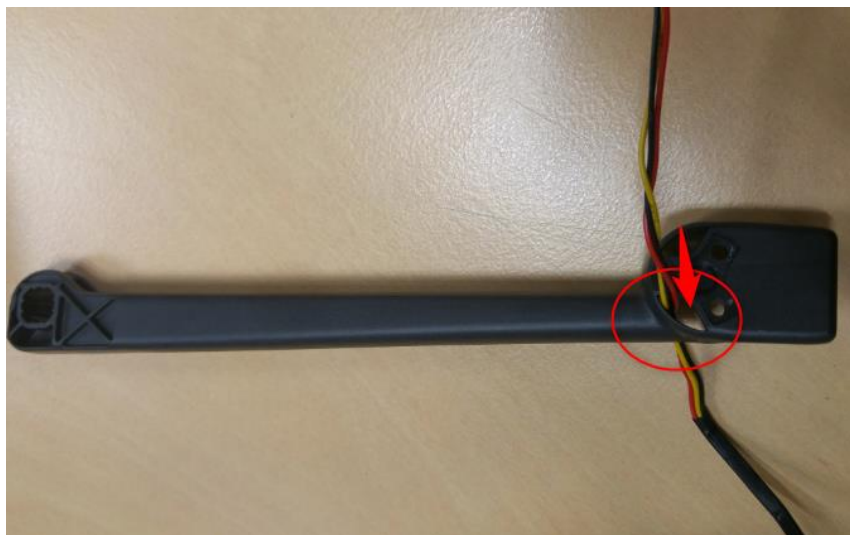
Number	Associated part
1	LED wire
2	Ventilator

- Position the rubber part back, next to the motor card (smaller hole on the top side).



Arms :

- Slide the motor wire inside the large hole of the top part of the arm.



- On the low part of the arm, insert simultaneously the antenna and the reflector in their respective slots. You can let the antenna wire free for now.

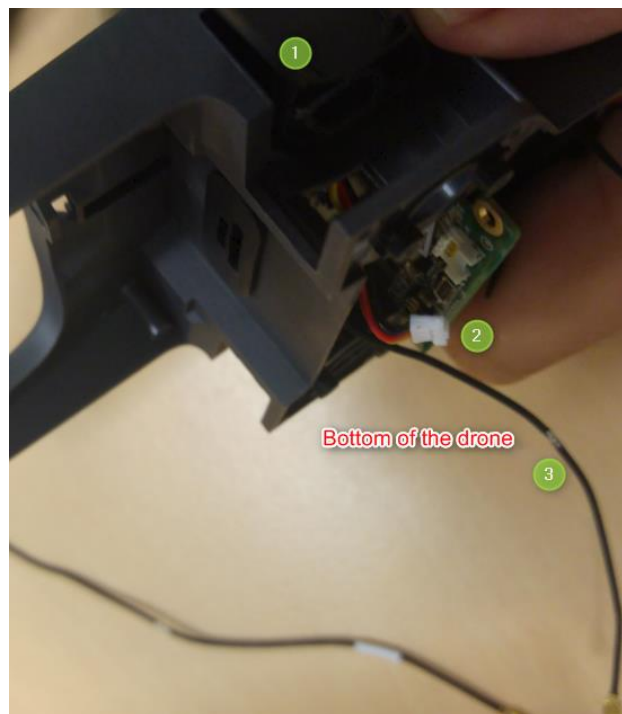


Numéro	Élément du drone
1	Antenna
2	Reflector

- Slide the antenna wire and the motor wire inside the same hole, then assemble both parts of the arm by clipping the top part inside the bottom part, then pushing the top part to the bottom part.



- Put the screws back to stick the upper and bottom parts together.
- Insert arms in their dedicated slots on the central body and insert both antenna wire and motor wire in the bottom part of the drone.



Numéro	Drone part
1	Arm
2	Motor Wire
3	Antenna wire

- Insert the other arm from the same side (there is no priority order between the front and back arms).
- -Insert the washer between the arms and make sure it is well centered (you can use a screwdriver to align the washer through the hinge hole).
- Insert the top side hinge (the larger white part must be placed at the rear of the drone), and make sure the hinge is completely inserted by pushing on it.

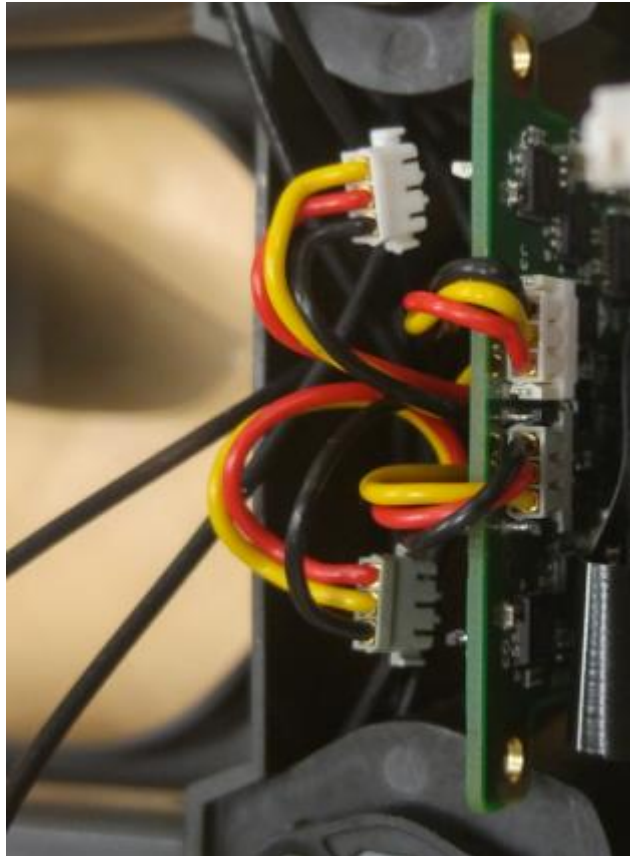


- Position the plastic holder on the lower part of the hinge with the larger extremity on the rear side of the drone.
- -Put the screws back on the larger extremities of the hinge (one on the top side; one on the lower side).
- -Repeat to install each arm.
- -Position antenna wires toward the front of the drone and the motor wires toward the back of the drone.

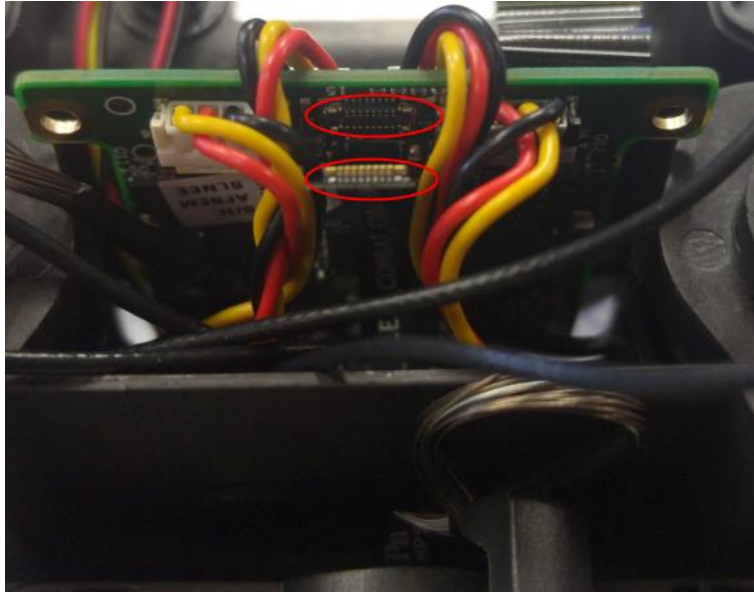


Motor wiring

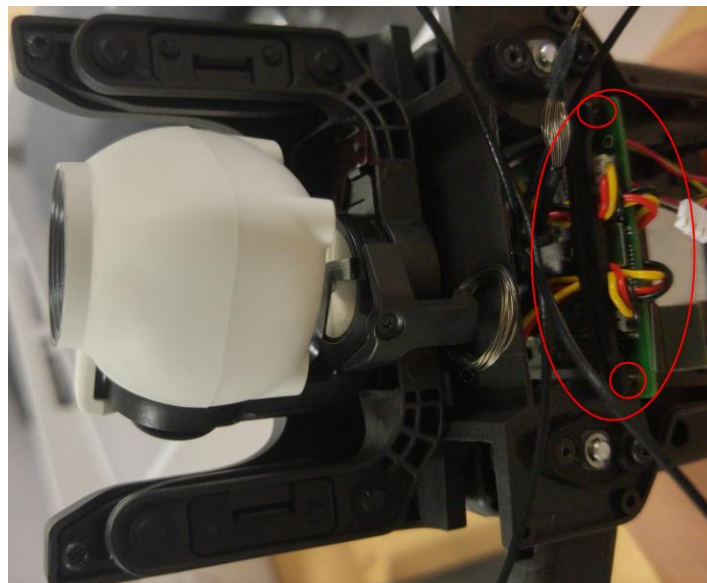
- Front motor connectors are plugged on the rear side of the motor card; rear motor connectors must be plugged on the front side of the card. Apply a torsion on the wires to plug the rear motors on the card.



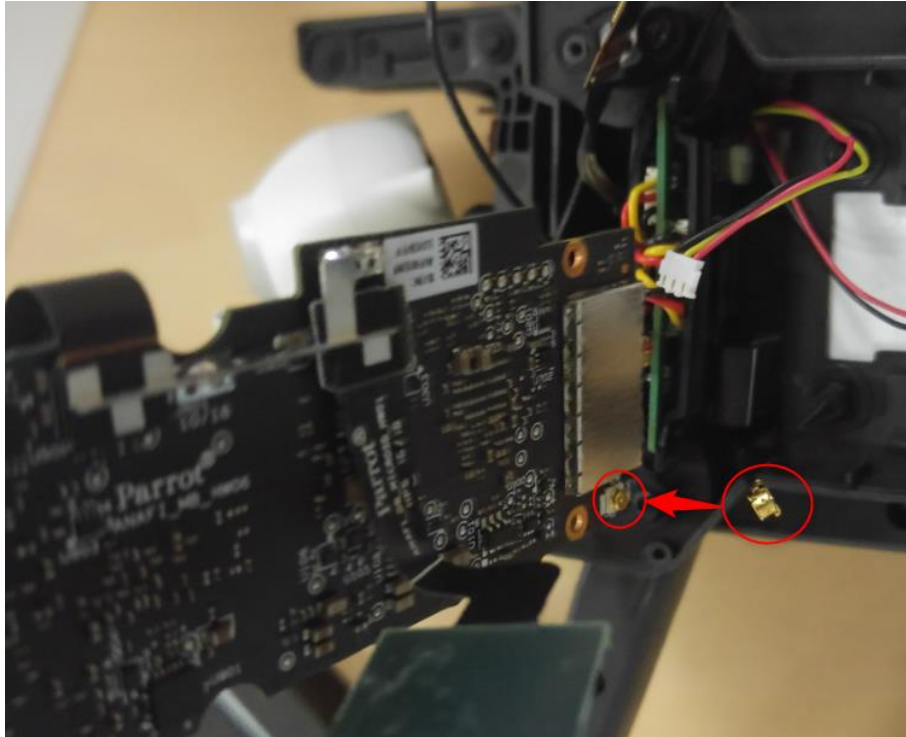
- Push wires gently toward the inside of the drone.
- Position the gimbal and slide wires through the rubber support (coaxial wire slides through the large hole and flex cable through the small one). Pull the coaxial wire gently to keep enough length to plug it.
- Screw the two screws on the front side of the gimbal before plugging the flex wire.



- Hold the drone with the gimbal oriented upward and position the first part of the motor holder (the one with the holes). Then, position the other part of the support by clipping it (the part including the antenna holders). The part with three slots must be on the right side of the drone.



- Position the GPS card back and screw it; check that the antenna wire is not stuck. Position the GPS cover back and screw it.
- To place the motherboard back correctly, start by plugging back the GPS antenna.

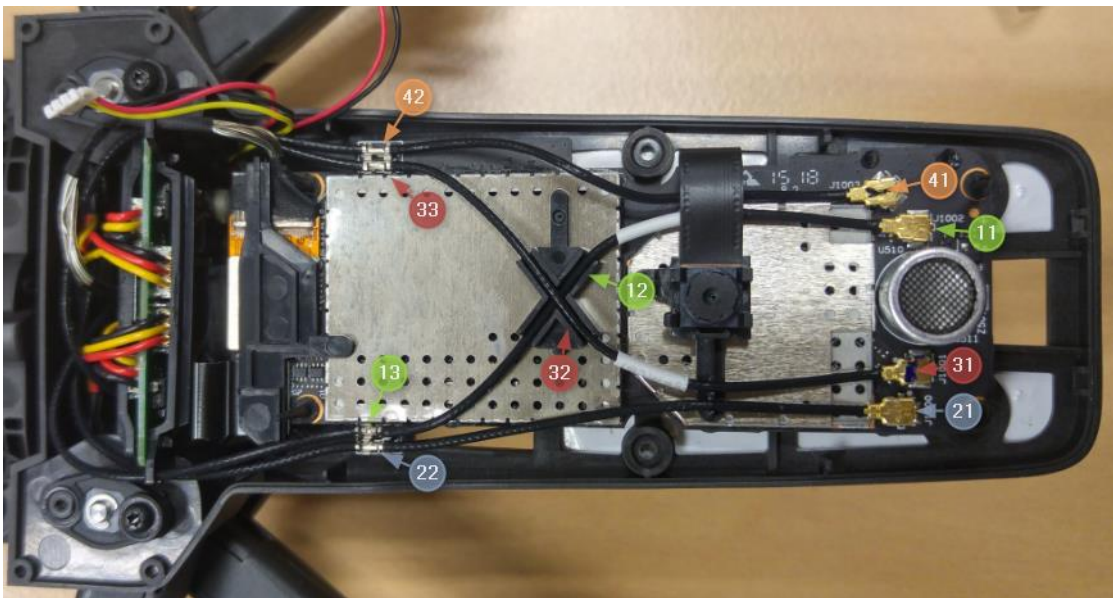


- Insert the micro SD PCB through the hole on the center body and press on it to stick it in the dedicated slot.



- Position the motherboard back in place by placing it on the two rubbers of the front of the drone, then on the two rubbers on the rear of the drone.
- Make sure antenna wires are above the LED wire and ventilator.

- Looking the drone from the bottom, position the left side antennas, take the rear foot antenna (rear antennas have a white fool proof device), slide it under the vertical camera and plug it to the second connector on the right side. Insert the wire on the cross-shaped slot (step 12). Finish the process by plugging the wire on the ground reminder (step 13).
- Connect the front antenna (left side) to the first connector on the left, then connect it on the ground reminder.
- Connect the right rear antenna to the second connector on the left side before inserting the wire in the cross-shaped slot and plugging it to the ground reminder.
- Finally, connect the right front antenna to the first connector on the right side, after sliding it under the vertical camera, and connect the ground reminder.



Follow those steps: 11 → 12 → 13 → 21 → 22 → 31 → 32 → 33 → 41 → 42

- Once every antenna wire has been positioned, conclude the process by plugging them to the holders near the vertical camera.
- Insert the plastic holder which holds the flex cable to the motherboard by attaching the left side first, then the right side. Make sure the stamp is positioned on the dedicated hole.
- Insert the ventilator in the dedicated slot of the bottom cover. The sticker on the ventilator must be turned toward the inside of the drone.
- Connect the LED card.
- Make sure there is enough free wire to let the gimbal move in any direction.
- Insert the bottom cover, starting from the front side, before clipping it; make sure no wire is visible.
- Conclude the assembly process by screwing the bottom protection back.